

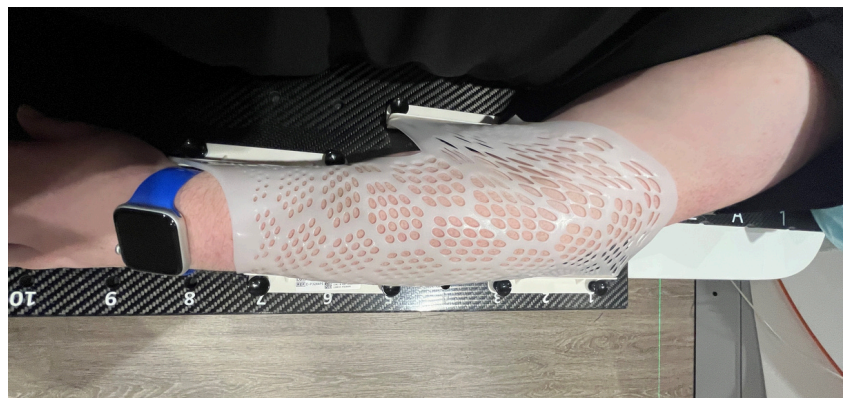
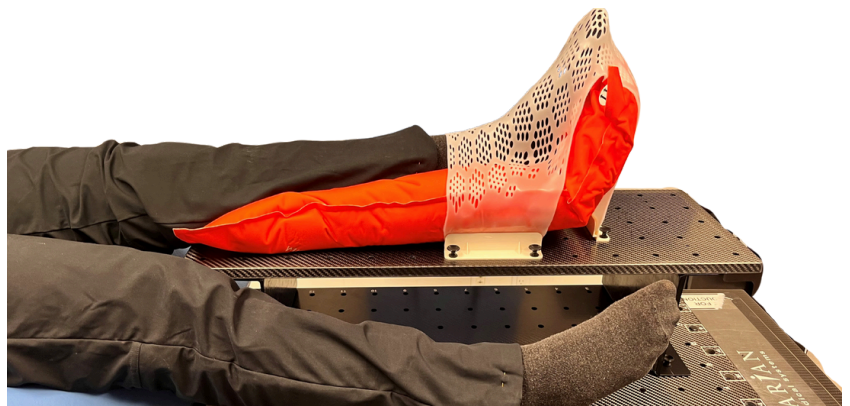
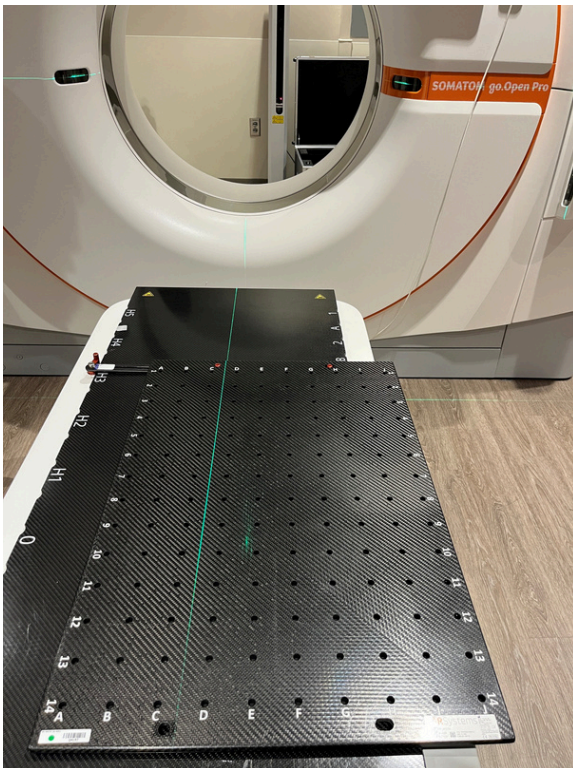
## Supporting and Growing Your RT Practice with ExtremityLock™ Advanced Immobilization for LDRT and Complex Limb Setups

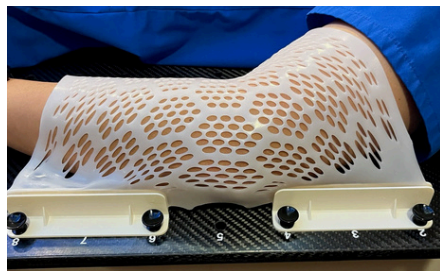
**ExtremityLock™** is a highly versatile extremity immobilization system for LINAC-based applications, purpose-built to support Low Dose Radiation Therapy (LDRT) and other complex limb positioning scenarios. Constructed from low-density, lightweight materials, ExtremityLock™ provides stable, reproducible immobilization to ensure precise and effective treatment delivery.

**LDRT** has shown promising results in delivering long-term pain relief and enhanced mobility in the benign radiation treatment of patients with osteoarthritis (OA), tendonitis, and other musculoskeletal conditions, as supported by numerous international clinical studies. With minimal side effects and high reproducibility, LDRT is gaining recognition as a safe and effective therapeutic modality—and ExtremityLock™ is engineered to support and advance its clinical application.

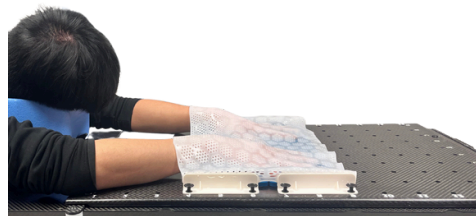
### Key Features:

- **Large Fixation Surface** – Maximizes positioning flexibility and secure immobilization of various limb configurations.
- **Low-Density, Lightweight Construction** – Engineered for compatibility with imaging and radiotherapy workflows, ensuring radio-translucency across all areas of the device.
- **Digital Setup Sheets (SIM)** – Streamlines simulation planning and improves setup reproducibility.
- **Multiple Lateral Offset Positions** – Accommodates a wide range of anatomical and clinical treatment needs.
- **Anatomical-Specific Masks** – Delivers customized immobilization for consistent and accurate positioning.

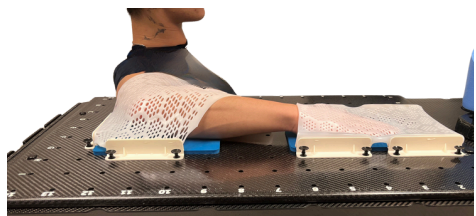




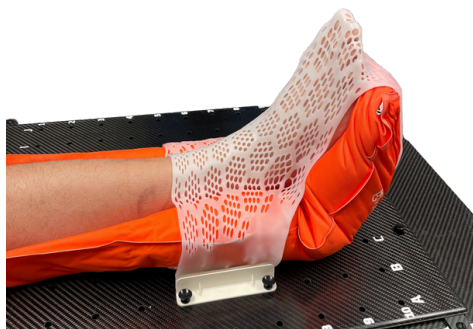
**Elbow**



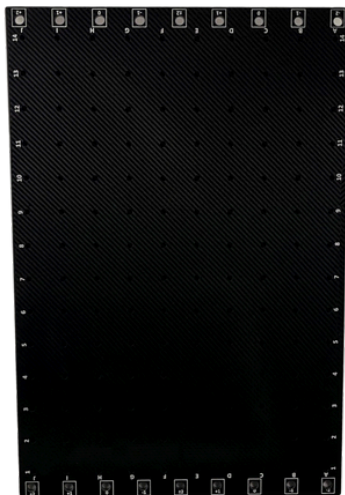
**Dual Hand**



**Elbow, Arm and Hand**



**Foot**



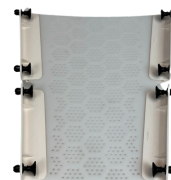
**EXT24-STD**  
ExtremityLock™ Overlay



**EXT-RISE**  
ExtremityLock™ Riser  
Leg Support



**E-P32X3P**  
Foot and Ankle



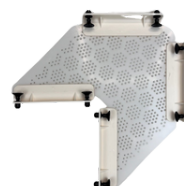
**E-P32X4P**  
Hand, Knee, and Leg



**E-P32X5PL**  
Left Shoulder



**BS32X**  
Double Hand or Hip



**E-P32X4PE**  
Elbow and Arm



**E-P32X5PR**  
Right Shoulder

## Packages

|             |  |     |
|-------------|--|-----|
| EXT-24STD-S | <b>Starter Kit</b> - Extremity Lock Overlay (1EA), Thermoplastics for Hand, Arm, Leg, Elbow, Foot (x20), Vac Lock Cushion - VB-4080F15 (x1), Foam Comfort Cushions.  | PKG |
| EXT-24STD-E | <b>Elite Kit</b> - Extremity Lock Overlay (x1), Thermoplastics for Hand, Arm, Leg, Elbow, Foot (x20), Vac Lock Cushions - VB-4080F15 (x1), VB-2525F2 (X1), Index Bars - IB06-CF-V (x2), Foam Comfort Cushions (x5), Indexing Kit (x1). | PKG |

## Items

|           |  |      |
|-----------|--|------|
| EXT-24STD | ExtremityLock™ Overlay for E-Type Thermoplastics                     | EA   |
| E-P32X4P  | E-Type ExtremityLock™ Hexspand 4 Point Mask 3.2mm                    | 5 PK |
| E-P32X4PE | E-Type ExtremityLock™ Hexspand 4 Point Elbow Mask 3.2mm              | 5 PK |
| E-P32X3P  | E-Type ExtremityLock™ Hexspand 3 Point Mask 3.2mm                    | 5 PK |
| E-P32X5PL | E-Type ExtremityLock™ Hexspand 5 Point Left Shoulder Mask 3.2mm      | 5 PK |
| E-P32X5PR | E-Type ExtremityLock™ Hexspand 5 Point Right Shoulder Mask 3.2mm     | 5 PK |
| BS32X     | E-Type ExtremityLock™ Hexspand 4-point Gen II Mask - Dual Hand 3.2mm | 5 PK |
| E-PFCC    | ExtremityLock™ EVA Foam Comfort Cushions                             | 1 PK |
| E-PIK     | ExtremityLock™ Indexing Kit for TOTIM Posterior Cushions             | 1 PK |